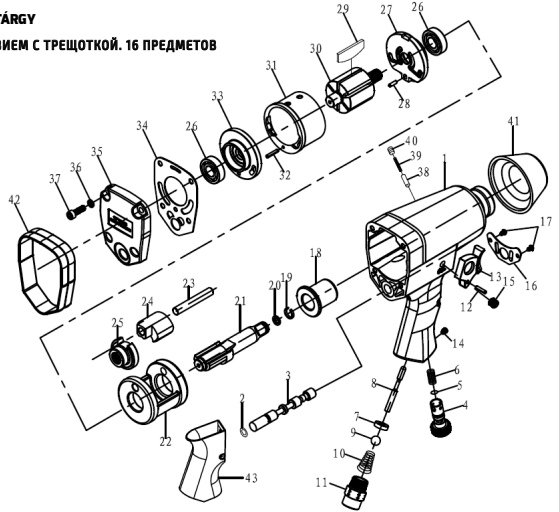


- ES** ESTUCHE DE 16 PIEZAS NEUMÁTICAS CON PISTOLA Y CARRACA IMPACTO
- EN** 16 PIECES KIT WITH AIR WRENCH AND RATCHET
- FR** COFFRET 16 PIÈCES PNEUMATIQUE AVEC CLÉ À ROCHET
- DE** SATZ DES DRUCKLUFTSCHLÜSSELS MIT SCHLAGFUNKTION MIT RATSCHKE. 16 -TEILIG
- IT** VALIGETTA DA 16 PEZZI PNEUMATICI CON CRICCHETTO E AVVITATORE
- PT** KIT DE 16 CHAVES PNEUMÁTICAS COM PISTOLA E ROQUETE
- RO** TRUSĂ DE 16 PIESE PNEUMATICE CU PISTOL DE IMPACT ȘI CLICHET
- NL** SET VAN PNEUMATISCHE SLAGMOERSLEUTEL MET RATEL. 16-DELIG
- HU** ŰTŐ HATÁSÚ RACSNIS PNEUMATIKUS KULCSKÉSZLET, 16 TÁRGY
- RU** НАБОР ПНЕВМАТИЧЕСКОГО КЛЮЧА С УДАРНЫМ ВОЗДЕЙСТВИЕМ С ТРЕЩОТКОЙ. 16 ПРЕДМЕТОВ
- PL** ZESTAW NARZĘDZI PNEUMATYCZNYCH

SPECIFICATIONS

Bolt Capacity	9/16" (14mm)
Free Speed	7,000RPM
Average air consumption	5CFM@90PSI
Max torque	312N-M (230FT-LB)
Air Inlet	1/4"
Air Pressure	90PSI (6.3Kg/cm ²)
Weight	2.20Kg
Air Exhaust	Front Exhaust



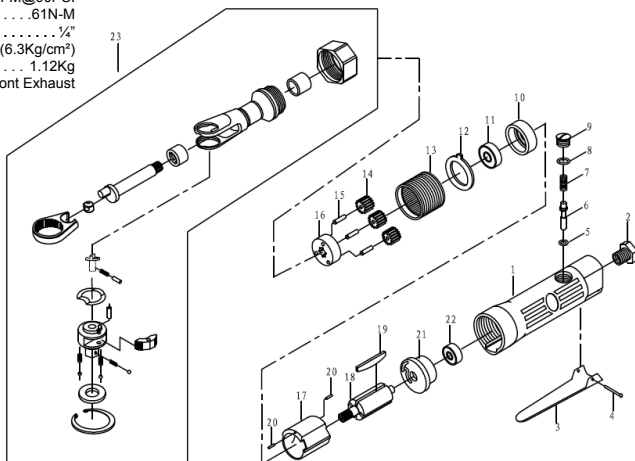
PARTS LIST

N°	Part #	DESCRIPTION	QTY
1	WFI-1070-01	Housing	1
2	O RIGN 6.4*1.9	O-Ring	1
3	WFI-1070-02	Reversal Regulator	1
4	WFI-1070-03	Flow Regulator	1
5	JB/T6659-2007 8*2	O-Ring	1
6	WFI-1070-04	Regulator Spring	1
7	WFI-1070-05	Bushing	1
8	WFI-1070-06	Pin	1
9	GB/T308-2002 9.525	Steel Ball	1
10	WFI-1070-07	Taper Spring	1
11	WFI-1070-08	Air Inlet Connector	1
12	GB/T879.2-2000 3*14	Straight Pin	1
13	WFI-1070-09	Trigger	1
14	GB/T79-2000 M5*8	Screw	1
15	GB/T77-2000 M8*6	Screw	1
16	WFI-1070-10	Steel Disc Cover	1
17	Screw ST3.2*6	Screw	2
18	WFI-1070-11	Oily Bushing	1
19	WFI-1070-12	Anti-off Circle	1
20	GB/T3452.1-1992 6*1.8	O-Ring	1
21	WFI-1070-13A	Drive Shaft	1

22	WFI-1070-14	Hammer Cage	1
23	WFI-1070-15	Pin	1
24	WFI-1070-16	Hammer Dog	1
25	WFI-1070-17	Drive Cam	1
26	GB/T276-1994 6001-2Z	Bearing	2
27	WFI-1070-18	Front Cylinder Head	1
28	GB/T879.2-2000 3*10	Straight Pin	1
29	WFI-1070-19	Blade	6
30	WFI-1070-20A	Rotor	1
31	WFI-1070-21	Cylinder	1
32	GB/T879.2-2000 3*16	Straight Pin	1
33	WFI-1070-22	Back Cylinder Head	1
34	WFI-1070-23	Sealing Gasket	1
35	WFI-1070-24	Real Cover	1
36	GB/T93-1987 5	Spring Gasket	4
37	GB/T70.1-2000 M5*16	Screw	4
38	WFI-1070-25	Pin	1
39	WFI-1070-26	Spring	1
40	GB/T70.1-2000 M5*6	Screw	1
41	WFI-1070-27	Front Jacket	1
42	WFI-1070-28	Back Jacket	1
43	WFI-1070-29	Handle Jacket	1

SPECIFICATIONS

D Size 3/8" & 1/2"
Free Speed 150RPM
Average air consumption 5CFM@90PSI
Max torque61N-M
Air Inlet 3/4"
Air Pressure 90PSI (6.3Kg/cm ²)
Weight 1.12Kg
Air Exhaust Front Exhaust



PARTS LIST

Nº	Part #	DESCRIPTION	QTY
1	WRF-1060-01	Housing	1
2	WRF-1060-02	Air Inlet Connector	1
3	WRF-1060-03	Trigger	1
4	GB/T873-86 3*24	Rivet	1
5	O RING 3.2*1.9	O-Ring	1
6	WRF-1060-04	Pin	1
7	WRF-1060-05	Spring	1
8	JB/T6659-2007 8*2	O-Ring	1
9	WRF-1060-06	Nut	1
10	WRF-1060-07	Front Cylinder Head	1
11	GB/T276-1994 608-2Z	Bearing	1
12	WRF-1060-08	Washer	1
13	WRF-1060-09	Gear Ring	1
14	WRF-1060-10	Planet Gear	3
15	WRF-1060-11	Planet Pin	3
16	WRF-1060-12	Planet Cageincl	1
17	WRF-1060-13	Cylinder	1
18	WRF-1060-14	Rotor	1
19	WRF-1060-12	Blade	4
20	GB/T879.2-2000 1.5*6	Straight Pin	2
21	WRF-1060-15	Back Cylinder Head	1
22	GB/T276-1994 626-2Z	Bearing	1
23	WRF-1060-16	Ratchet Handle Component	1

52156



www.jbmcamp.com

C/ Rejas, 2 - P5, Oficina 17
 28821 Coslada (Madrid)
 jbm@jbmcamp.com
 Tel. +34 972 405 721
 Fax. +34 972 245 437